



Installation Instructions: Ceiling Mount Drapery, Valance, & Stationary Panels



Step 1: Lay out all hardware pieces from your shipment.

Valance Notes: Valance board will have 3 sides with Velcro and 1 side without Velcro. The side without Velcro is the “back edge” of the board which will be against the wall.

Step 2: Set your ceiling clips to the back edge of the board and screw in using a #8 x $\frac{3}{4}$ ” coarse sheet metal screw (these screws are not provided but can be purchased at any hardware store).

Step 3: Mount the rod inside of the Mounting Bracket using a flat head screw driver to lock the rod into position (See #1, 2, 4 on *Hardware Diagrams for Ceiling Mount Drapery*).

Step 4: Measure from the inside track of the 1st rod to center of board 3.5” to mark where the 2nd rod/ceiling clips should be placed (See #3 on *Hardware Diagrams for Ceiling Mount Drapery*).

Step 5: Screw the ceiling clips in place and lock the rod into position.

Step 6: For stationary panels, set the ceiling clips to the edge of the “front side” of the board (Velcro edge).

Step 7: Screw the ceiling clips in place and lock the stationary rods into position.

Step 8: Place the back edge of the valance board to the wall and hold up against the ceiling.

Step 9: Screw the valance board to the ceiling using #8 x $\frac{3}{4}$ ” coarse sheet metal screw or #8 x 2 $\frac{1}{4}$ ” Tapcon screw (these screws are not provided but can be purchased at any hardware store).



Step 10: Bolt the 1" x 1" L Brackets (Angle Iron) into the wall. This is to hook the drapery return. (For placement, see #5 on *Hardware Diagrams for Ceiling Mount Drapery*).

Step 11: If you have a blackout and sheer, install the blackout against the window on the 1st rod and the sheer on the outer 2nd rod. If you have a decorative blackout or drapery and sheer, place the sheer on the 1st rod against the window and the blackout/drape on the 2nd rod.

Step 12: Install the stationary panels making sure the last hook is placed on the inside of the 1" x 1" L Bracket.

Step 13: "Break the Pleats" after your drapery is completely installed by pulling the fabric straight out towards you between the two pleats, while holding the fabric with one hand. Take your other hand and make a vertical crease into the fabric. This will allow the drape to fold back and forth correctly while opening or closing the drape.

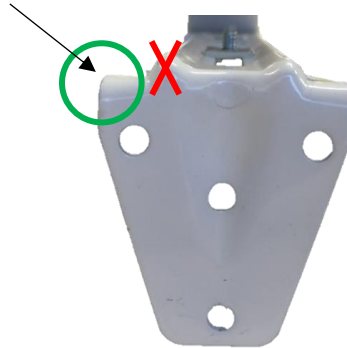
For video instructions, please visit www.amerifabintl.com/installation.

Hardware Diagrams for Wall Mount Drapery

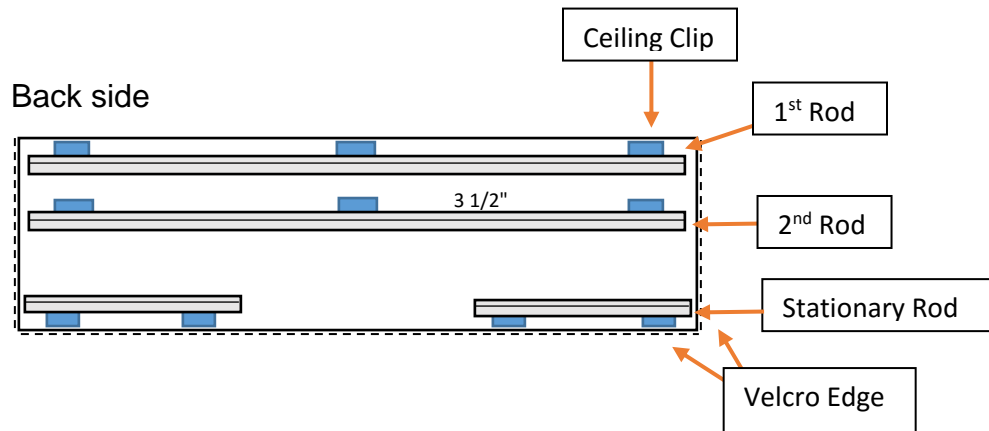
1. Wall Mounting Bracket



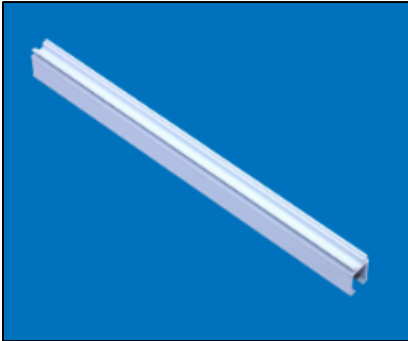
2. Top Edge of Mounting Bracket



3. Underside of Ceiling Mounted Valance Board



4. Drapery Rod- To lock drapery rod into position insert flat head screw driver and turn to its locked position.



5. 1" x 1" L Bracket- Line up the edge of the 1" x 1" bracket with the center of the hole in the last carrier.

